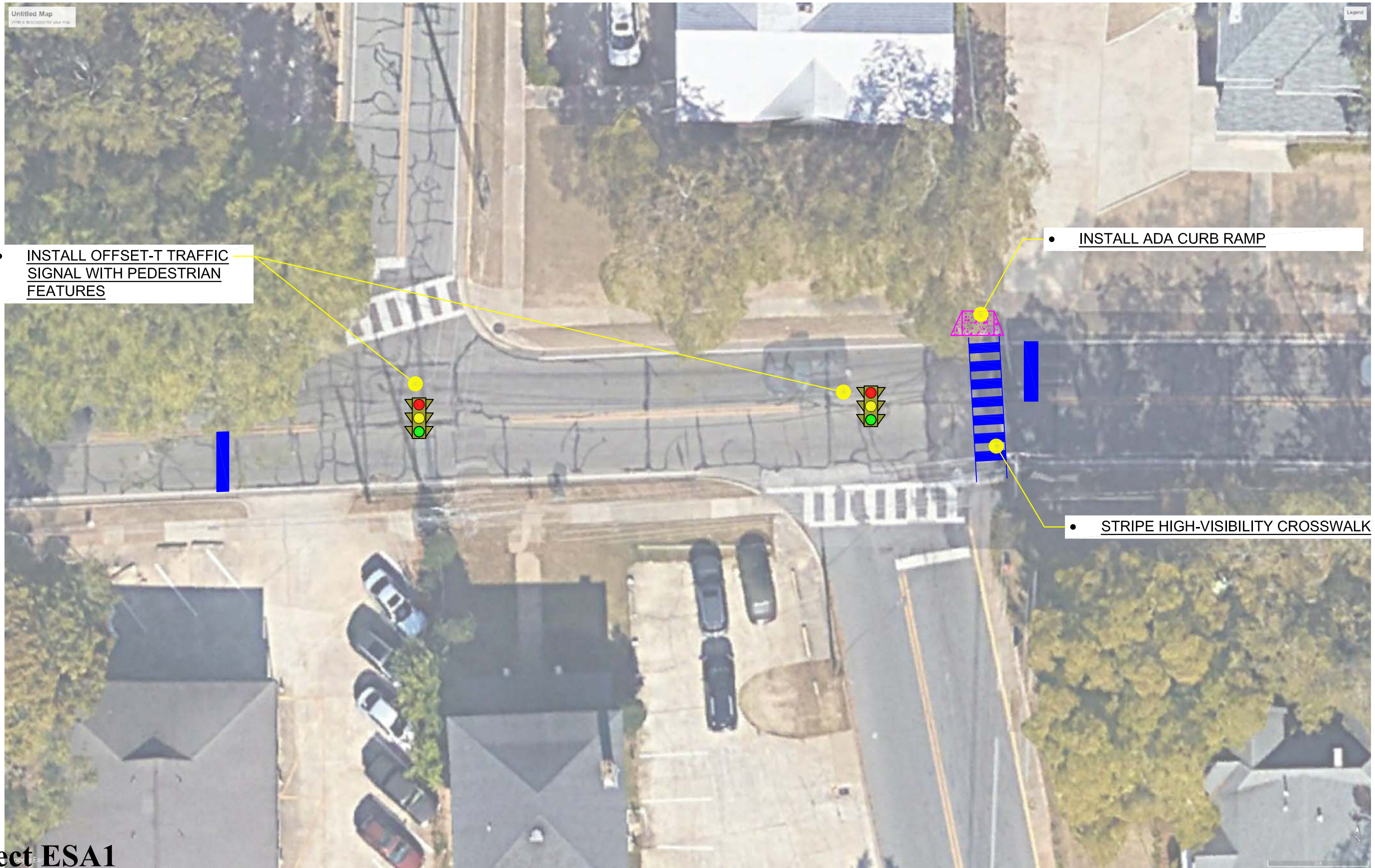


Section 4J:

Recommended Improvement Projects Samford Avenue





• INSTALL OFFSET-T TRAFFIC SIGNAL WITH PEDESTRIAN FEATURES

• INSTALL ADA CURB RAMP

• STRIPE HIGH-VISIBILITY CROSSWALK

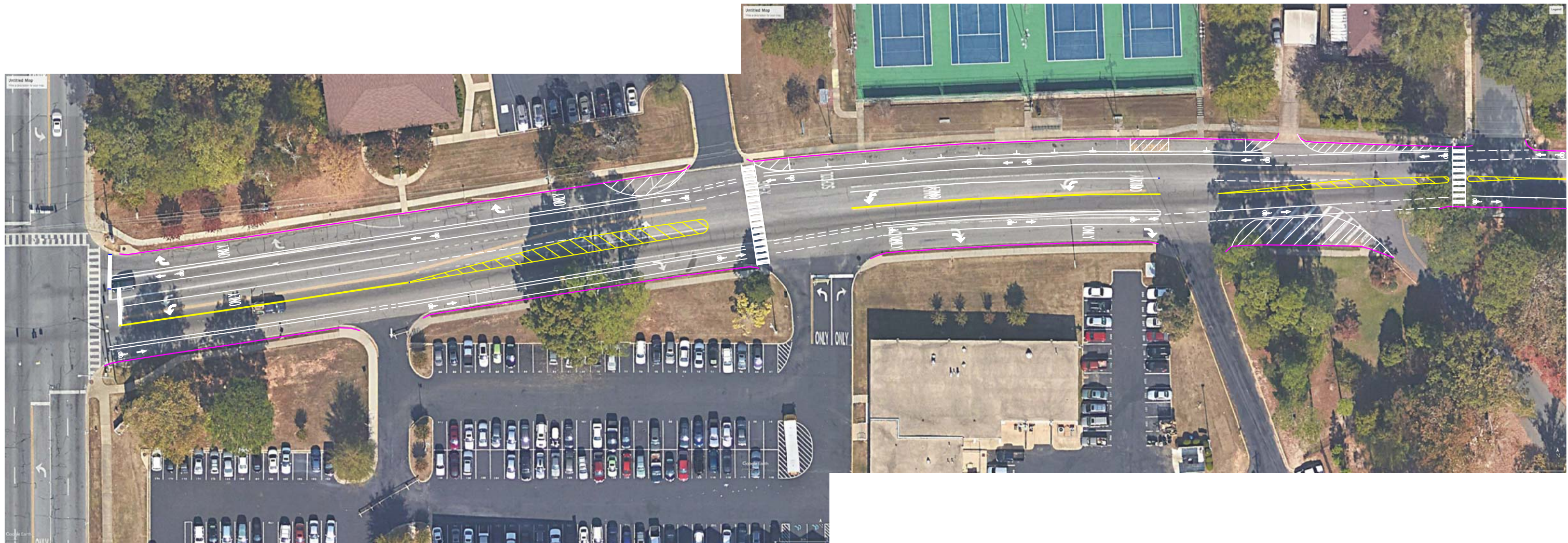
Project ESA1



**Figure 6 - Samford Ave. at Wrights Mill Rd./
Armstrong St. - Auburn, Alabama**

LEGEND

Scale: Not to Scale
Date: 3/5/19



Project ESA2



**Figure 7 - Samford Ave at Auburn Middle School
Auburn, Alabama**

LEGEND

Scale: Not to Scale
Date: 1/3/19